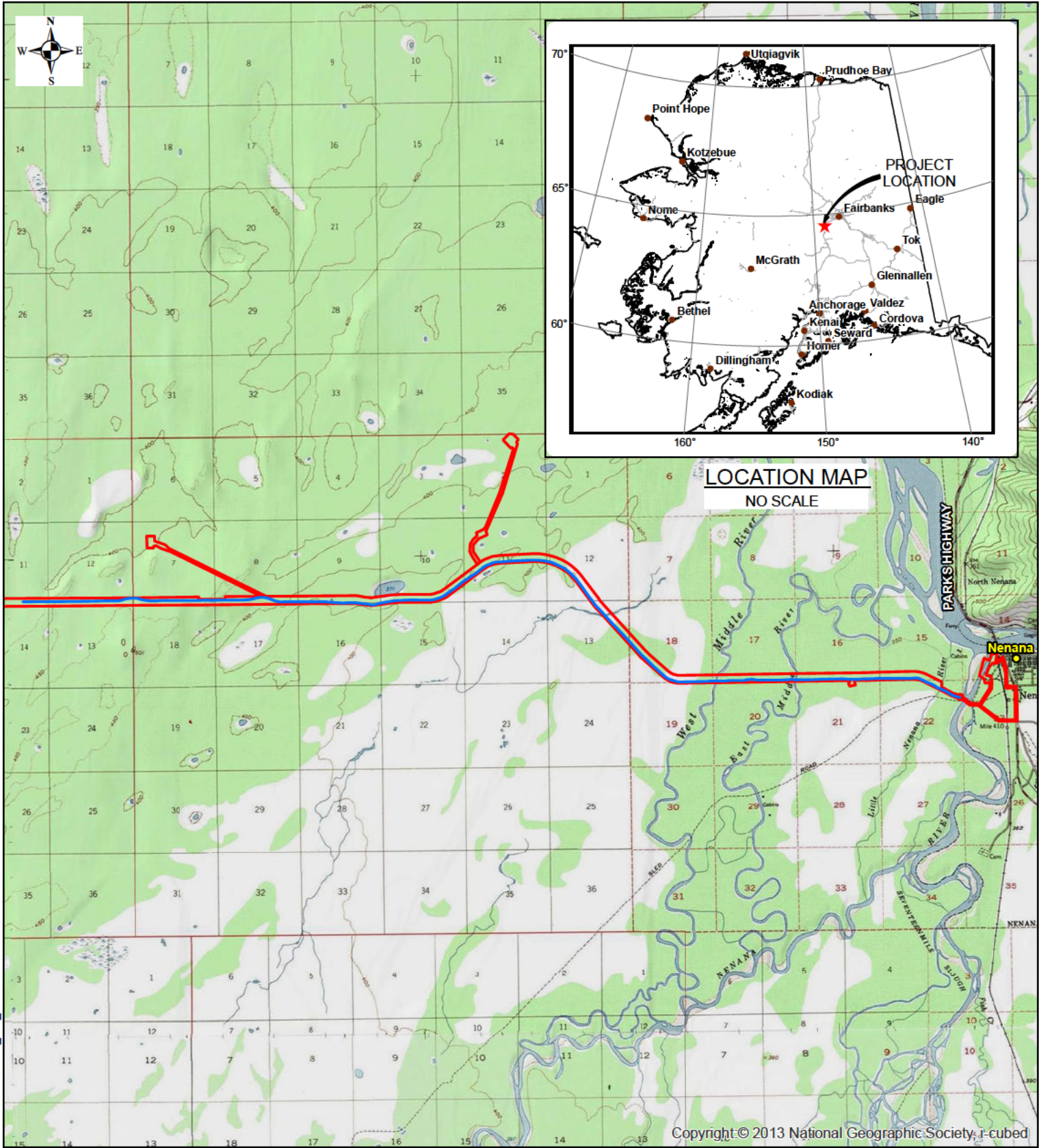
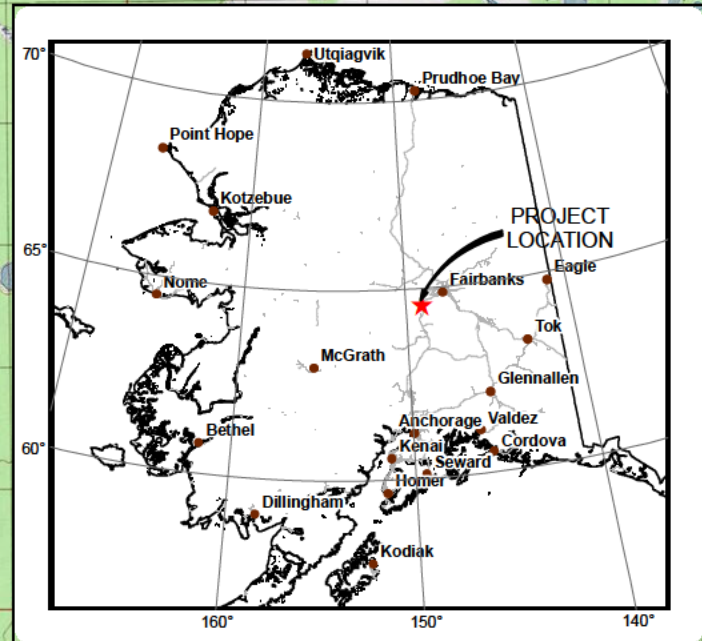


Appendix A
Project Figures

Nenana-Totchaket Road Project
NSHWY00657



LOCATION MAP
NO SCALE

Nenana

Copyright © 2013 National Geographic Society, i-cubed

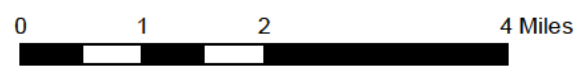
<u>Township and Range</u>	<u>Sections</u>
T4SR12W	7-13
T4SR11W	7-17
T4SR10W	7-12, 14-18
T4SR9W	7-13, 15-18
T4SR8W	15-22

Fairbanks Meridian

VICINITY MAP
NO SCALE

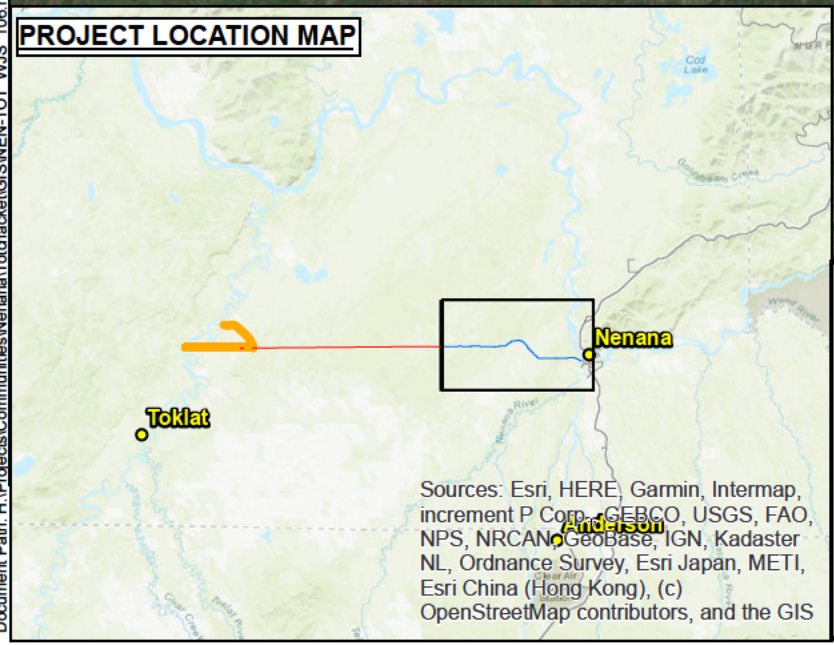
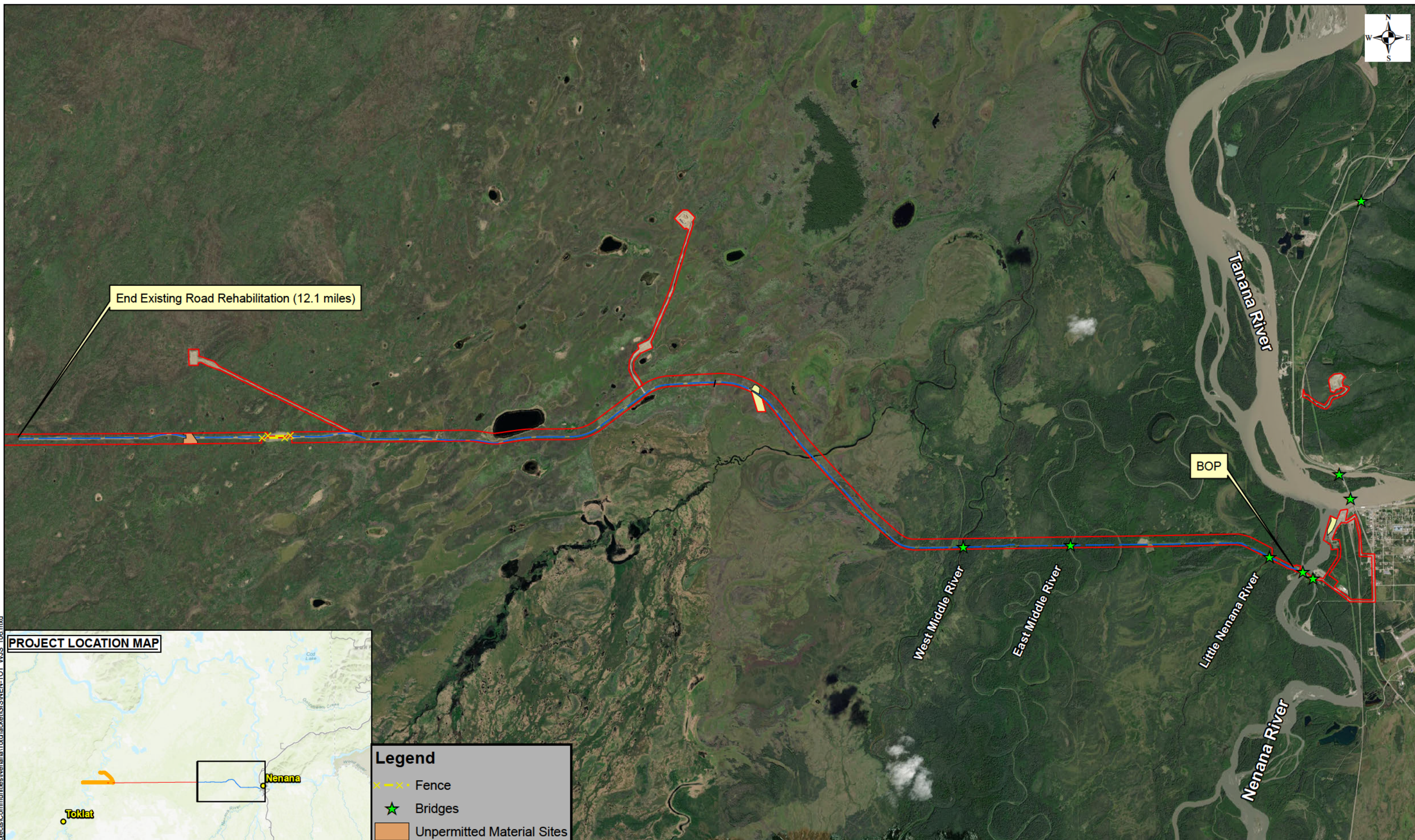
STATE OF ALASKA
Department of Transportation and Public Facilities
2301 Peger Road Fairbanks, AK 99709

NENANA-TOTCHAKET ROAD
NFHwy00657
NENANA, ALASKA



Date: September 2022

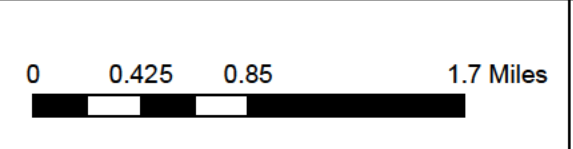
Figure 1



Sources: Esri, HERE, Garmin, Intermap, increment P Corp., GEBCO, USGS, FAO, NPS, NRCAN, GeBCO, IGN, Kadaster NL, Ordnance Survey, Esri Japan, METI, Esri China (Hong Kong), (c) OpenStreetMap contributors, and the GIS

Legend

- Fence
- Bridges
- Unpermitted Material Sites
- Permitted Material Sites
- Existing Totchaket Road
- APE



STATE OF ALASKA
Department of Transportation and Public Facilities
2301 Peger Road Fairbanks, AK 99709

Date: September 2022

Figure 2
Nenana Totchaket Road

Document Path: H:\Projects\Communities\Nenana\Totchaket\GIS\NEN-TOT_WJIS_106.mxd



Existing Material Site
ADL 420464

Existing, Commercially available
Material Site, owned by Doyon Ltd.

Existing Material Source/ Staging
ADL 421685

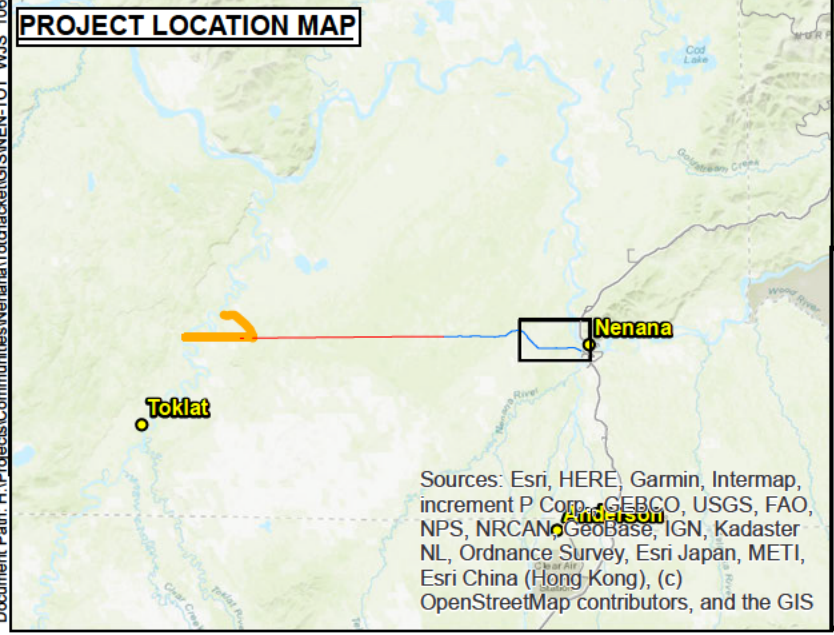
Bridge #1558

Bridge #1559

Bridge #1557

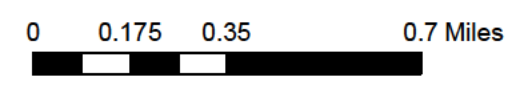
BOP

Staging
(Vegetation Cleared by City)



Legend

- ★ Bridges
- Turnout Areas
- Unpermitted Material Sites
- Permitted Material Sites
- Existing Totchaket Road
- APE



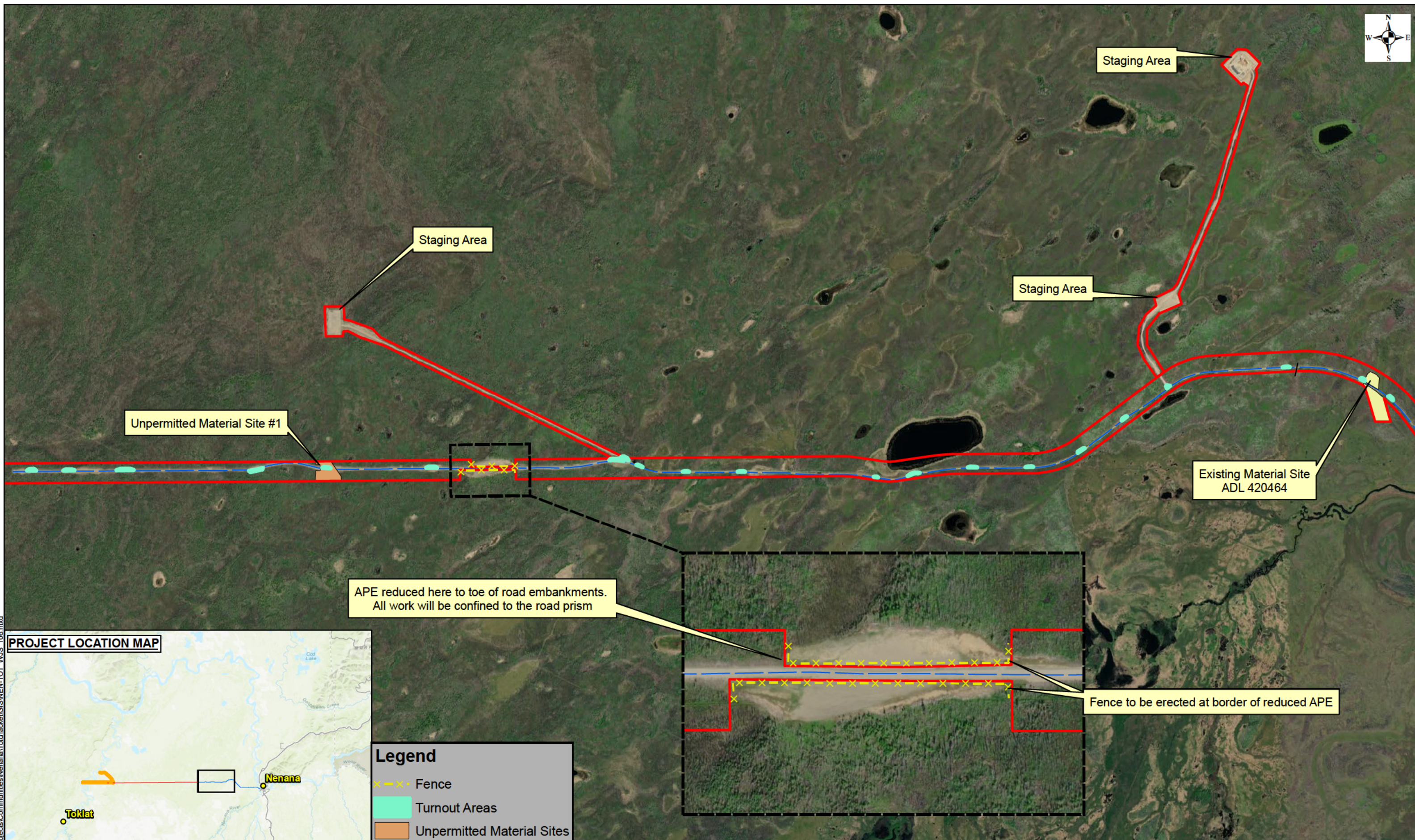
STATE OF ALASKA
Department of Transportation and Public Facilities
2301 Peger Road Fairbanks, AK 99709

Date: September 2022

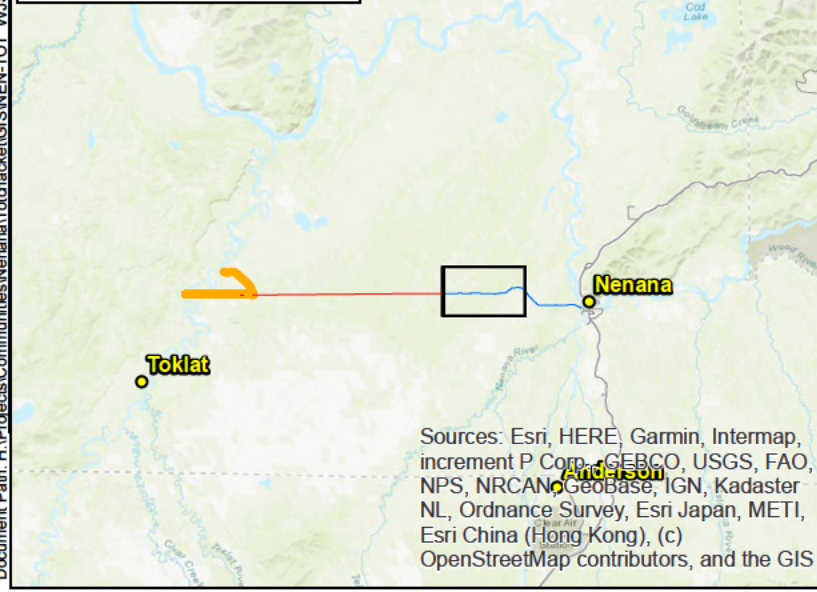
Figure 3

Nenana Totchaket Road

Document Path: H:\Projects\Communities\Nenana\Totchaket\GIS\NEN-TOT_WJIS_106.mxd

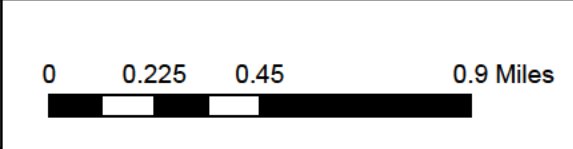


PROJECT LOCATION MAP



Legend

- Fence
- Turnout Areas
- Unpermitted Material Sites
- Permitted Material Sites
- Existing Totchaket Road
- APE



STATE OF ALASKA
 Department of Transportation and Public Facilities
 2301 Peger Road Fairbanks, AK 99709

Date: September 2022

Nenana Totchaket Road

Document Path: H:\Projects\Communities\Nenana\Totchaket\GIS\NEN-TOT_WJIS_106.mxd